

CHARGES for use of facilities

Charges available upon request.

General room hire includes hire of tables, chairs, whiteboards and all permanent fixtures.

Additional charges apply to the kitchen and use of electronic equipment.

To view our facilities and discuss your needs, please contact the office on 94381264 or call in and talk to us. The church office is located behind the Church complex. Enter from Hyde Street.

Insurance Cover and Security

Insurance cover must be obtained by the hirer either from The Anglican Diocese of Melbourne or personal insurance cover depending on the type of hiring sought.

Persons hiring or using buildings and other property of St. John's Anglican Church Diamond Creek accept responsibility for the safe custody of the property during the term of the hire or use.

The church is more than a building.

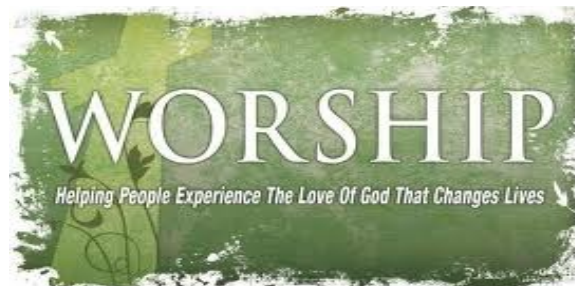
We are a community!

A church built on a hill, shining the light of God's love into the community for 145 years .

Built by pioneering families with strong bonds of community, our ongoing mission is:

"To know Christ and make Him known"

in Diamond Creek and beyond.



We would love you to join us for worship
on Sundays
at
9.30am and 6:00pm



St John's Anglican Church

Diamond Creek



**Facilities available
for
Community use
at
St. John's**

61 Main Street

Diamond Creek, Vic. 3089

Tel: 03 9438 1264

Email: office@stjohnsdc.org.au

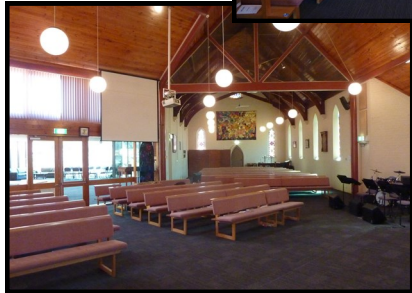
Web site: www.stjohnsdc.org.au

Our Facilities

Our facilities include a worship centre, foyer, hall, two meeting rooms, small library, playgroup room, toddler's room with access to an outdoor playground and a large commercial grade kitchen.

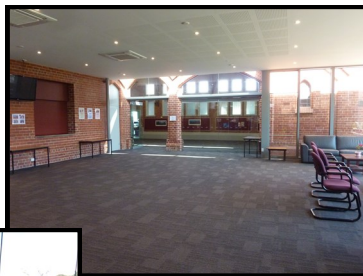
The Worship Centre holds up to 300 people.

It has a full sound system and digital projectors to front and rear screens.



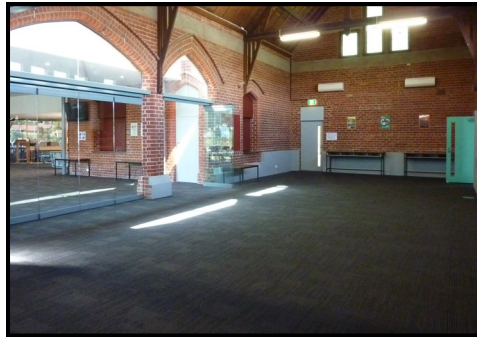
The Foyer is spacious and filled with natural light.

A relaxed, comfortable environment, the foyer holds approximately 200 people and has a servery to the



kitchen .
Bi-fold glass doors open into the hall to provide additional space for large functions.

The Hall is a generous size with a digital projector, screen and servery to the kitchen. It accommodates up to 200 people, or more when the doors are open to the foyer.



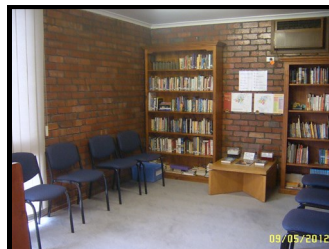
Meeting Room 1 is at the front of the building with



its own entrance. Facilities include white board, pin boards and a digital TV screen. It is ideal for seminars and meetings seating up to 20 people.

Meeting Room 2

is smaller and situated at the rear of the building. It caters for up to 12 people.



The Library is a quiet area suitable for small groups of 8 -10.

The Kitchen has a large commercial oven and cook top, a three-minute commercial dishwasher, a microwave, refrigerator and other appliances. It is fully equipped with cooking utensils, crockery and cutlery.



The Playgroup Room is used mainly for children's activities. It has vinyl flooring for easy cleaning and a sink. It seats 20 - 30 children and opens onto Meeting Room 1, via bi-fold doors, for additional space.



The Toddler and Babies Room is situated next to an outside playground area with direct access to the playground. It has a carpeted play space with a small sink and a TV on the wall.